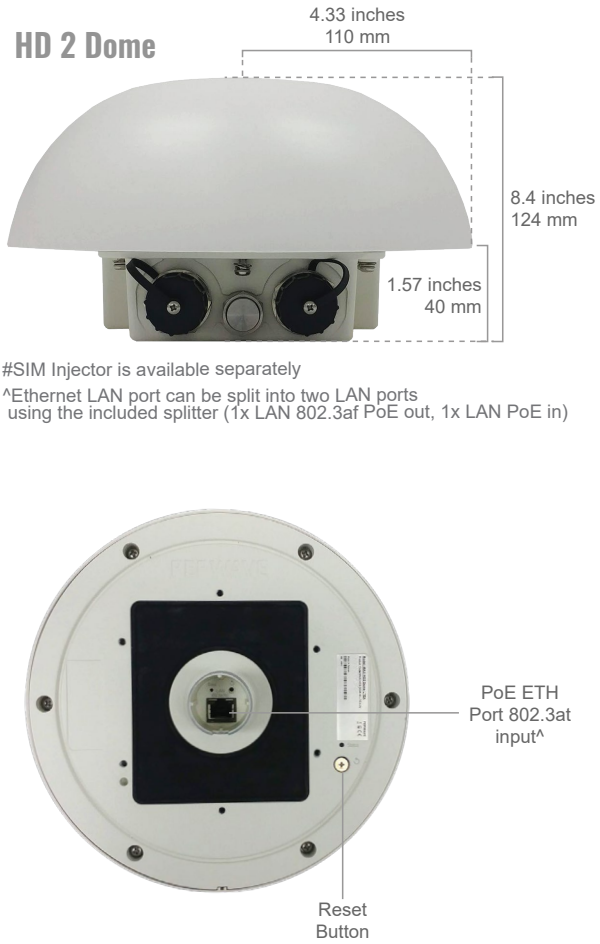


MAX HD2 Dome

Dual Cellular Router for Mobile Deployments

Specifications

MAX HD2 Dome	
WAN Interface	2x Embedded LTE Modems with Redundant SIM Slots*
LAN Interface	1x 10/100/1000M Ethernet Ports^
Downlink/Uplink Datarate	100/50Mbps (LTE) 300/50Mbps (LTEA) 600/150Mbps (LTE-A Pro)
Enclosure	Rugged outdoor IP67
Recommended Users	150
Cellular Antenna	2x2 Internal MIMO Antennas 1x Internal GPS Antenna
Included Antenna	Built-In Omni Antenna Antenna gain: 4dBi
Power Input	1x Power over Ethernet 802.3at
Power Consumption	20W (max.)
Dimensions	4.33in. (radius) x 4.53in. (height) 110mm (radius) x 115mm (height)
Weight	With Ethernet Splitter (1700 grams, 3.75 pounds) Without Ethernet Splitter (1200 grams, 2.65 pounds)
Operating Temperature	-40° – 149°F -40° – 65°C
Humidity	15% – 95% (non-condensing)
Certifications	FCC, CE, RoHS Shock and Vibration Resistance: EN 61373:1999 IEC 61373:1999
Warranty	1-Year Limited Warranty
Package Content	MAX HD2 Dome, Ethernet Splitter, 2x Waterproof Ethernet Connector (ACW-112), Mounting Kit Set



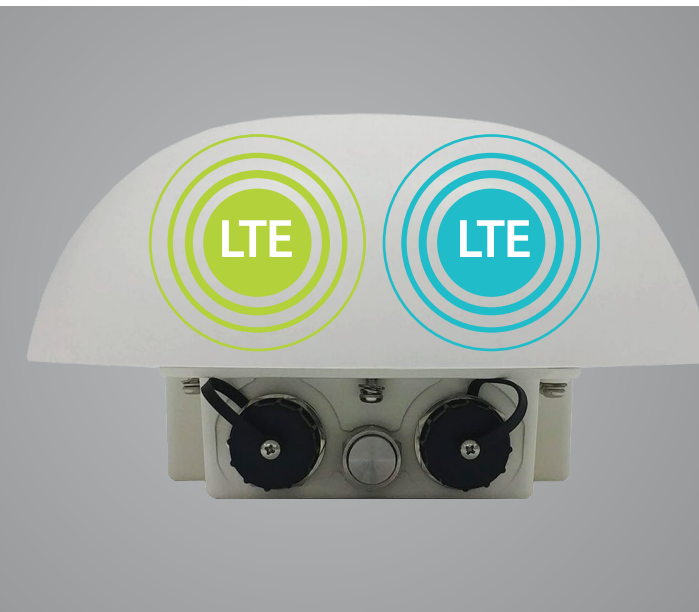
MAX HD2 Dome

Dual Cellular Router for Mobile Deployments



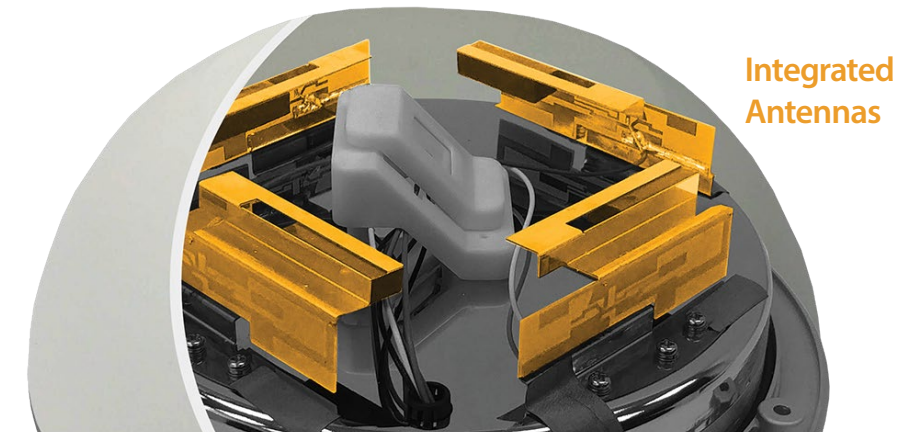
Achieve Dual-Cellular Connectivity, No Expensive RF Cable, Zero Cable Loss

The HD2 Dome provides dual-cellular Bandwidth Bonding in an IP67 enclosure that has a minimal profile on the rooftop while providing maximum signal. With redundant SIM, the HD2 Dome supports two cellular radios and four SIM cards. Combine the HD2 Dome with the SIM Injector, and the number of cards increases to twelve.



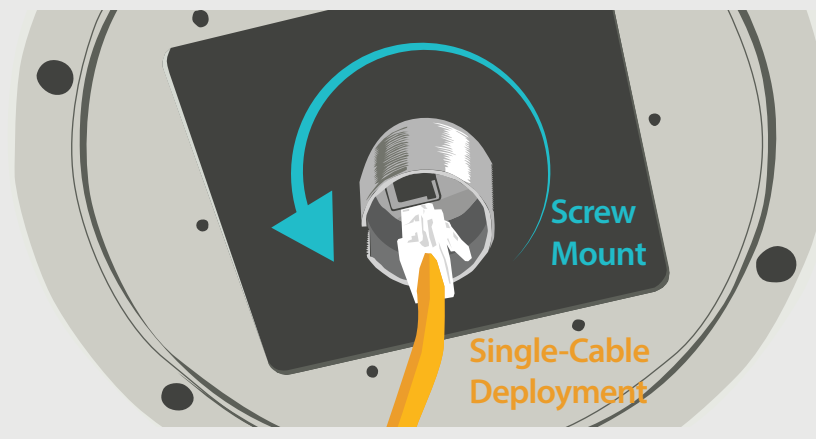
Minimum Cable Loss, Best Cellular Signal Quality

Most outdoor deployments require a centrally placed router attached to strategically placed antennas. With the HD2 Dome, the antennas are placed in the same integrated enclosure as the cellular radios. This arrangement minimizes cable loss, giving you the best signal possible.



Ordering Information - MAX HD2 Dome

	Product Code	Carrier/Region	Modems	Cellular Standard	4G Bands	3G Bands
LTE	MAX-HD2-DOM-MLTE-E	Europe/ International/ CAT-4	2	LTE	B1, B3, B7, B8, B20	WCDMA/HSPA+/DC-HSPA+: B1, B2, B5, B6, B8
	MAX-HD2-DOM-MLTEA-W	Worldwide/ CAT-6	2	LTE Advanced	B1, B2, B3, B4, B5, B7, B8, B12, B13, B20, B25, B26, B29, B30, B41	WCDMA/HSPA+/DC-HSPA+: B1, B2, B3, B4, B5, B8
	MAX-HD2-DOM-MLTEA-P	Asia Pacific/ CAT-6	2	LTE Advanced	B1, B3, B5, B7, B8, B18, B19, B21, B28, B38, B39, B40, B41	WCDMA/HSPA+/DC-HSPA+: B1, B5, B8, B9, B19 UMTS: B6 TD-SCDMA: B39
LTEA	MAX-HD2-DOM-MLTEA-WF	America/FirstNet/ CAT-12/CAT-6	2	LTE Advanced Pro: Cellular 1 LTE Advanced: Cellular 2	Cellular 1: 4G LTE-A Pro: B1, B2, B3, B4, B5, B7, B8, B9, B12, B13, B14, B18, B19, B20, B26, B29, B30, B32, B41, B42, B43, B46, B48, B66 Cellular 2: 4G LTE-A: B1, B2, B3, B4, B5, B7, B8, B12, B13, B20, B25, B26, B29, B30, B41	Cellular 1: HSPA+: B1, B2, B4, B5, B6, B8, B9, B19 Cellular 2: WCDMA/HSPA+/DC-HSPA+: B1, B2, B3, B4, B5, B8
	MAX-HD2-DOM-MLTEA-WK	Global / CAT-12/CAT-6	2	LTE Advanced Pro: Cellular 1 LTE Advanced: Cellular 2	Cellular 1: 4G LTE-A Pro: B1, B2, B3, B4, B5, B7, B8, B9, B12, B13, B18, B19, B20, B26, B28, B29, B30, B32, B41, B42, B43, B46, B48, B66 Cellular 2: 4G LTE-A: B1, B2, B3, B4, B5, B7, B8, B12, B13, B20, B25, B26, B29, B30, B41	Cellular 1: HSPA+: B1, B2, B4, B5, B6, B8, B9, B19 Cellular 2: WCDMA/HSPA+/DC-HSPA+: B1, B2, B3, B4, B5, B8
	MAX-HD2-DOM-MLTEA-K	Global / CAT-12	2	LTE Advanced Pro	4G LTE-A Pro: B1, B2, B3, B4, B5, B7, B8, B9, B12, B13, B18, B19, B20, B26, B28, B29, B30, B32, B41, B42, B43, B46, B48, B66	HSPA+: B1, B2, B4, B5, B6, B8, B9, B19

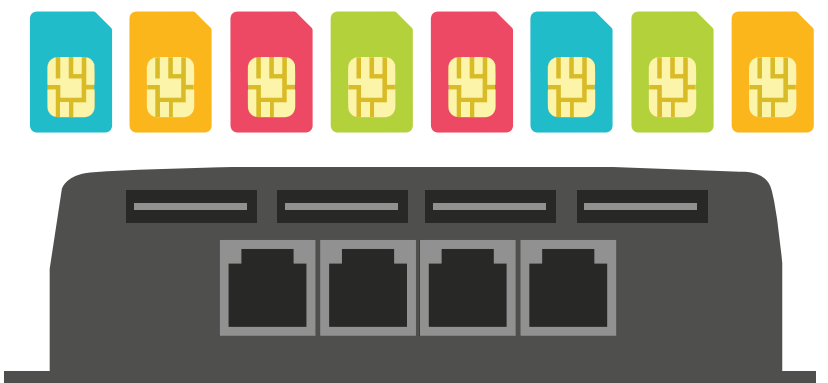


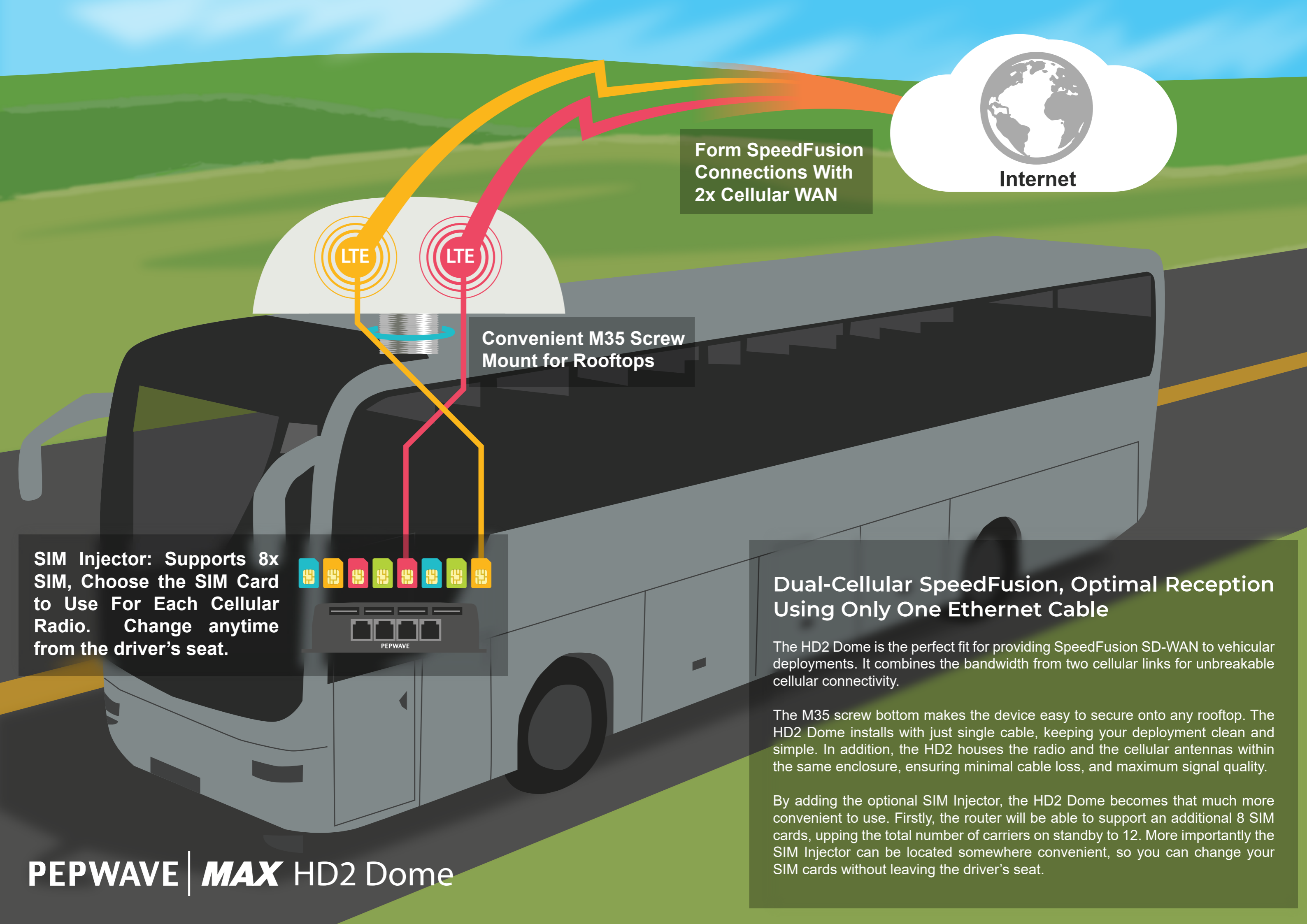
Simple Installation Running a Single Ethernet Cable

The HD2 Dome has a M35 screw mount, and only requires a single Ethernet cable to install. For wall or pole mounted deployments, the HD2 Dome comes with an Ethernet splitter and a mounting rack that provides a multitude of installation options.

Choose Between 8 Additional SIM With the SIM Injector. Anywhere, Anytime.

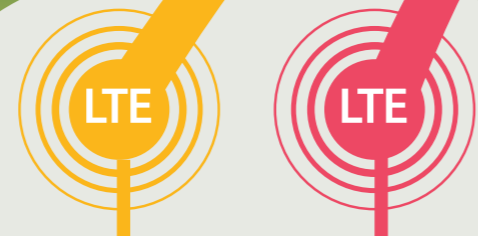
With the addition of the SIM bank, the HD2 Dome can support up to 12 SIM at your fingertips. Simply connect an Ethernet cable between the SIM Injector and the HD2 Dome. The SIM Injector is capable of PoE output, so you don't need to add another PoE switch to your deployment.





Internet

Form SpeedFusion Connections With 2x Cellular WAN



Convenient M35 Screw Mount for Rooftops

SIM Injector: Supports 8x SIM, Choose the SIM Card to Use For Each Cellular Radio. Change anytime from the driver's seat.



Dual-Cellular SpeedFusion, Optimal Reception Using Only One Ethernet Cable

The HD2 Dome is the perfect fit for providing SpeedFusion SD-WAN to vehicular deployments. It combines the bandwidth from two cellular links for unbreakable cellular connectivity.

The M35 screw bottom makes the device easy to secure onto any rooftop. The HD2 Dome installs with just single cable, keeping your deployment clean and simple. In addition, the HD2 houses the radio and the cellular antennas within the same enclosure, ensuring minimal cable loss, and maximum signal quality.

By adding the optional SIM Injector, the HD2 Dome becomes that much more convenient to use. Firstly, the router will be able to support an additional 8 SIM cards, upping the total number of carriers on standby to 12. More importantly the SIM Injector can be located somewhere convenient, so you can change your SIM cards without leaving the driver's seat.

SpeedFusion SD-WAN for Any Remote Site

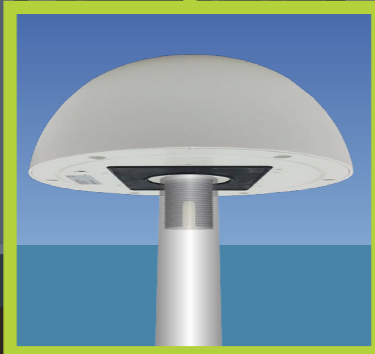
The HD2 Dome uses SpeedFusion SD-WAN to combine the bandwidth of two cellular links, providing unbreakable connectivity to any branch office or temporary site. It comes with an wide range of mounting options for any installation.

For pole-mounted or rooftop installations, the HD2 Dome has a M35 screw bottom that can be used to screw the device onto a pole, or to secure it on a rooftop. For wall-mounted or pole-tied deployments, the HD2 Dome comes with an Ethernet splitter and a mounting bracket. With the bracket, the HD2 Dome can be fixed onto a wall using the screw mounts, or tied into place on the side of a pole.

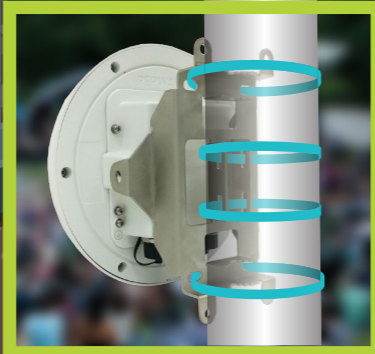
With the optional SIM Injector, the HD2 Dome can support a total of 12 SIM cards, ensuring that any datastreams carrying important VoIP and ERP related traffic remain unbreakable. The SIM Injector can be deployed to up 100 meters away from the HD2 Dome, enabling you to place the router at the point of best possible reception without worrying about climbing up to swap SIM cards.



Fixed to the Wall



Poletop/Rooftop



Tied to a Pole



Use the SIM Injector to change an additional 8 cards effortlessly.

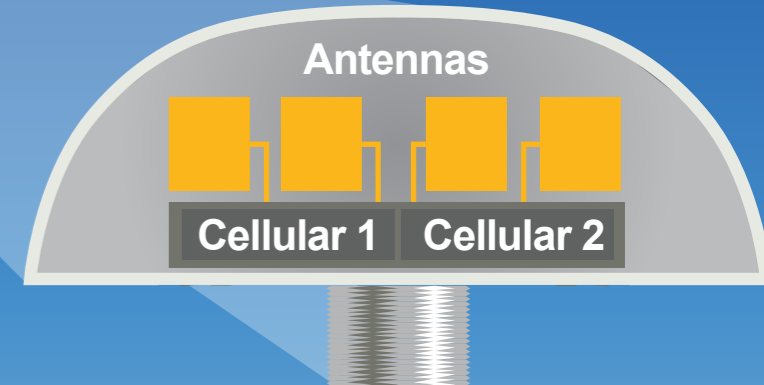




Internet

Form SpeedFusion
Connections With
2x Cellular WAN

Up to 100m range
between HD2 Dome
and SIM Injector



Minimum Distance
Between Antennas and
Cellular Radio

HD2 Dome: Dual-Cellular SpeedFusion SD-WAN For Any Outdoor Installation.

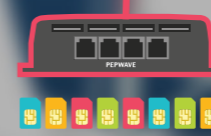
The HD2 Dome combines the bandwidth of two cellular links to provide unbreakable connectivity wherever your ship takes you. It has multiple mounting options to make installation easy: For rooftop/poletop installations, the router has a M35 threaded screw mount. The HD2 Dome also has a mounting bracket for mounting on walls or tying to poles. The HD2 Dome installs with just single cable, keeping your deployment clean and simple. In addition, the HD2 houses the radio and the cellular antennas within the same enclosure, ensuring minimal cable loss, and maximum signal quality.

SIM Injector: Optimum Reception, 8x SIM Support, Easy SIM Swapping, Have it All.

Installations often require a trade-off between reception and convenience. The SIM Injector lets you have it both ways by separating the SIM Card and the cellular router by up to 100 meters. What's more, the SIM Injector provides an additional 8 SIM cards to use with your HD2 Dome so you use SIM cards from all the countries along your route.

Achieving SpeedFusion SD-WAN between different countries has never been easier.

Use the SIM Injector to
Change SIM Cards
Without Climbing the Mast

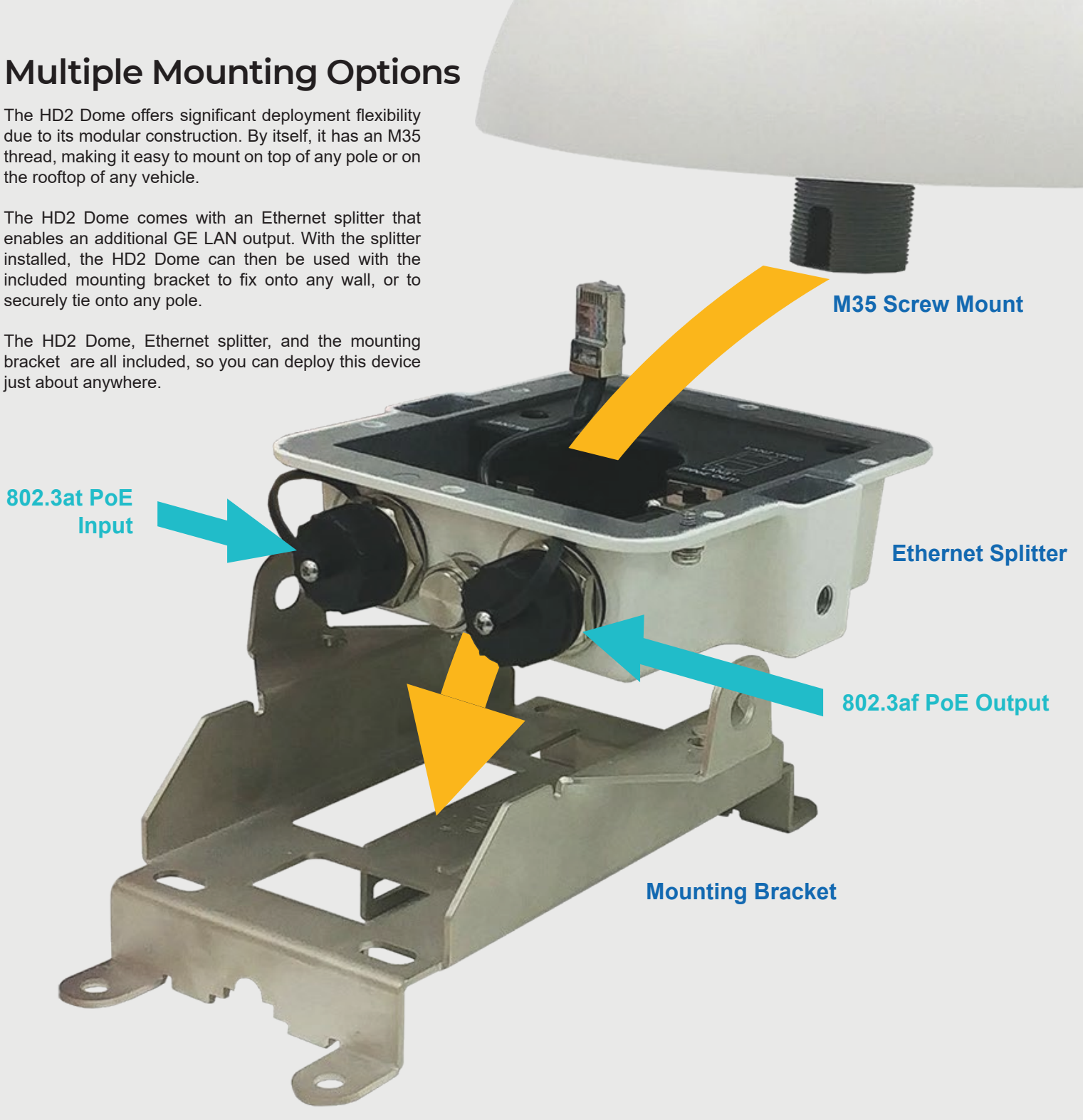


Multiple Mounting Options

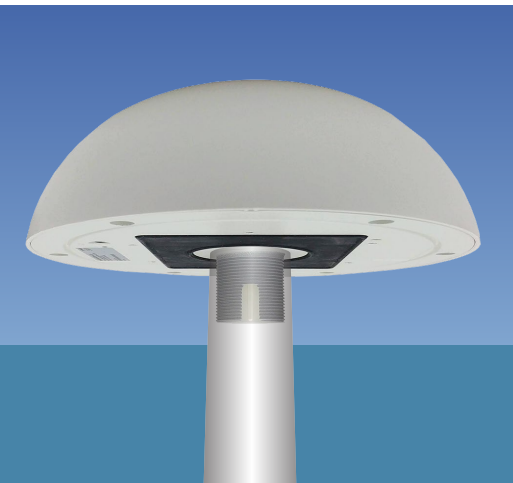
The HD2 Dome offers significant deployment flexibility due to its modular construction. By itself, it has an M35 thread, making it easy to mount on top of any pole or on the rooftop of any vehicle.

The HD2 Dome comes with an Ethernet splitter that enables an additional GE LAN output. With the splitter installed, the HD2 Dome can then be used with the included mounting bracket to fix onto any wall, or to securely tie onto any pole.

The HD2 Dome, Ethernet splitter, and the mounting bracket are all included, so you can deploy this device just about anywhere.



Deploy it Anywhere



Rooftop / Poletop



Tied to Any Pole



Mounted On Any Wall

SIM Injector - More SIM, More Range

Use the SIM Injector to add another 8 SIM cards to your deployment, giving you the ability to connect to multiple carriers and ensuring that your connection remains unbreakable.

In addition to adding SIM capacity, the SIM Injector also adds 100 meters of flexibility between the Router and the SIM cards, enabling you to place the cellular router anywhere you want without worrying about changing SIM cards.

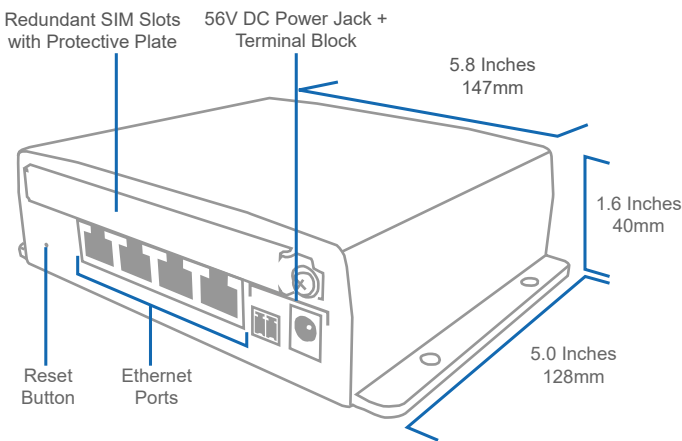
Finally, the SIM Injector uses an flexible architecture. You can connect multiple SIM Injectors to the HD2 Dome, and the device will have access to all the SIM cards carried by the SIM Injectors.

Extend up to
100m



Supports up to
8x
SIM Cards

Specifications



SIM Injector	
SIM Slots	8x Active SIM Slots, Standard Size
LAN Interface	4x GE, PoE 802.3at Support*
Power Input	DC Jack/Terminal Block: 12-56V
Dimensions	1.6 x 5.8 x 5 inches 40 x 147 x 128 mm
Weight	430 grams 0.94 pounds
Operating Temperature	-40° – 149°F -40° – 65°C
Humidity	15% – 95% (non-condensing)

Ordering Information - SIM Injector

Product Code	Description
SIM-BK8-4E-56V	SIM Injector, 8x SIM cards capacity, 4x 10/100/1000 LAN ports, 56V DC